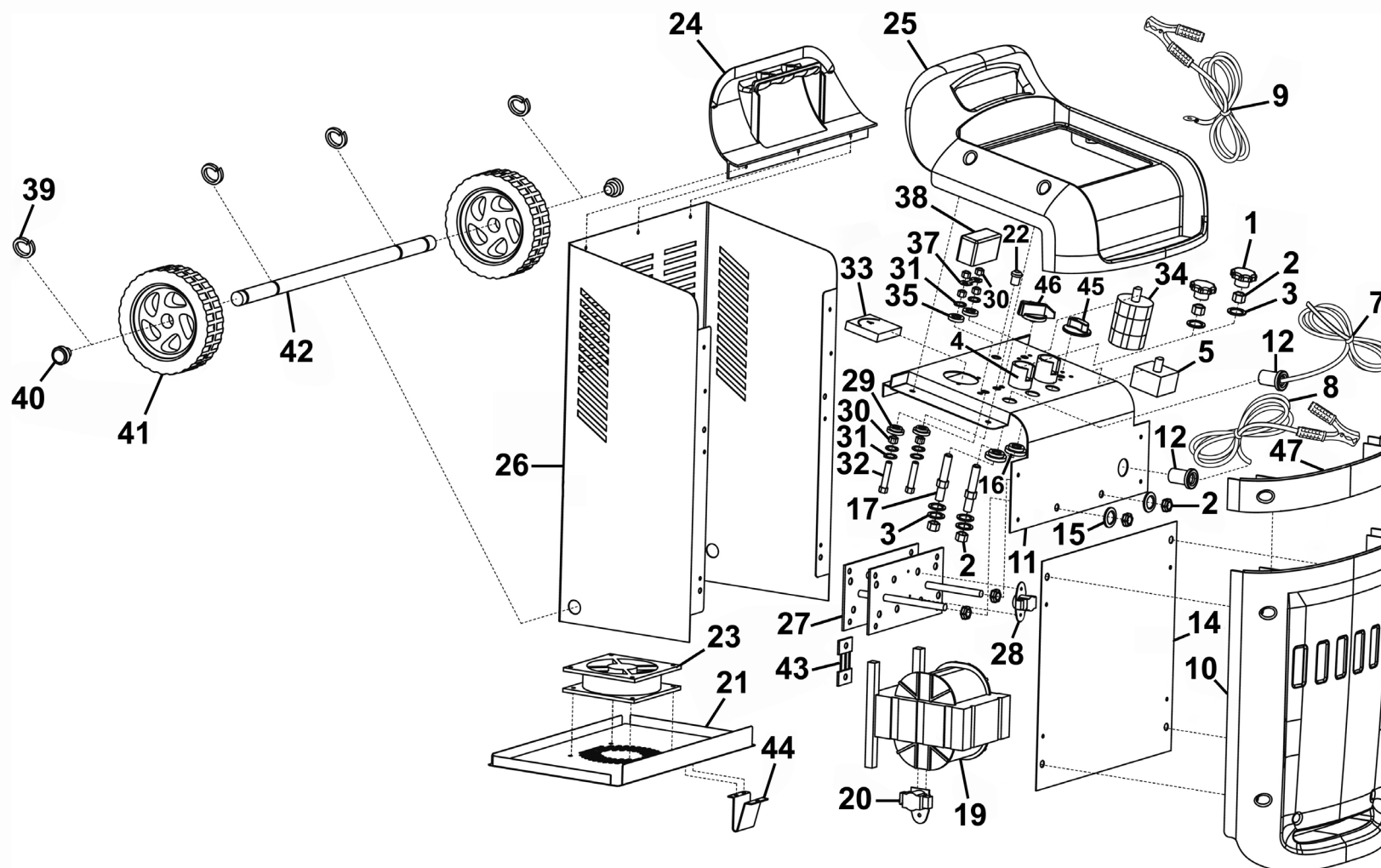


Parts Information: 12/24V Starter/Charger 660/100A 230V Model No: START660



NOTE: It is our policy to continually improve products and as such we reserve the right to alter data, specifications and component parts without prior notice.

There may be alternative versions of this product, please contact us should you require this information.

IMPORTANT: No liability is accepted for incorrect use of product. Spare parts must be fitted by a competent person

WARRANTY: Guarantee is 12 months from purchase date, proof of which will be required for any claim.

Jack Sealey Ltd t/a Sealey Group, Kempson Way, Suffolk Business Park, Bury St Edmunds, Suffolk, IP32 7AR UK

Jack Sealey (EU) Ltd t/a Sealey Group, Farney Street, Carrickmacross, Co. Monaghan, A81 PK68 Ireland

Tel: 01284 757500 • Email: sales@sealey.co.uk • Web: www.sealey.co.uk



Parts Information:
12/24V Starter/Charger 660/100A 230V
Model No: START660

Item	Part No.	Description
1	START800.01	Knob, Plastic, OD: 38mm, M6 Threaded Female Fitting
2	SN8.S	Steel Nut M8 Zinc
3	FWM8.S	Flat Washer M8 Zinc
4	START800.04	Terminal Protection Cover
5	START800.05	Timer Switch 16A 250V
7	START660.07	Power Cord
8	START660.08	Negative Cable with Clamp
9	START660.09	Positive Cable with Clamp
10	START660.10	Front Plastic Panel
11	START660.11	Top Panel
12	START660.12	Cable Grip
14	START800.14	Cover Panel
15	START800.15	Serrated Washer 8mm
16	START800.16	Insulating Washer
17	START800.17	Terminal Bolt M8
19	START660.19	Transformer
20	START660.20	Thermostat for Transformer
21	START660.21	Bottom Panel
22	START660.22	Overload Indicator
23	START660.23	Fan
24	START800.24	Handle Support Panel
25	START800.25	Top Plastic Cover
26	START660.26	Back Panel
27	START660.27	Rectifier

Item	Part No.	Description
28	START660.28	Thermostat for Rectifier
29	START800.29	Insulating Washer (A)
30	SN6.S	Steel Nut M6 Zinc
31	FWM6.S	Flat Washer M6 Zinc
32	SS635.S	Hex Head Set Screw M6 x 35mm Sinc
33	START800.33	Ammeter
34	START660.34	Switch, Rotary c/w Knob (HZ5B-20/7/3)
35	START800.35	Insulating Washer (B)
37	START360.F	Fuse 110Amp
--	START360.F10	Fuse 110Amp Pack of 10
38	START800.38	Fuse Box
39	SWM12.S	Spring Washer M12 Zinc
40	START800.40	Axle Cap
41	START800.41	Wheel, Fixed, Plastic, c/w Bearings (D:147 W:43 B:12)
42	START800.42	Wheel Axle: Solid, Black, Circlip Fittings (L:460mm D:12mm)
43	START660.43	Fusible Link
44	START800.44	Foot
45	START800.45	Knob, Timer Switch, OD: 39mm, 6mm Semicircular Female Fitting
46	START800.46	Knob Kit Ø34mm (c/w Fitting and 11 x 2mm Self Tapping Screw)
47	START800.47	Height Adjusting Panel

NOTE: It is our policy to continually improve products and as such we reserve the right to alter data, specifications and component parts without prior notice. There may be alternative versions of this product, please contact us should you require this information.

IMPORTANT: No liability is accepted for incorrect use of product. Spare parts must be fitted by a competent person

WARRANTY: Guarantee is 12 months from purchase date, proof of which will be required for any claim.

Jack Sealey Ltd t/a Sealey Group, Kempson Way, Suffolk Business Park, Bury St Edmunds, Suffolk, IP32 7AR UK
Jack Sealey (EU) Ltd t/a Sealey Group, Farney Street, Carrickmacross, Co. Monaghan, A81 PK68 Ireland
Tel: 01284 757500 • **Email:** sales@sealey.co.uk • **Web:** www.sealey.co.uk